



TOWN



HALL

ABITA

SINCE
1903

SPRINGS

Your Locally Owned Waste & Debris Partner



985-781-3171

***RECYCLING
PROGRAM IN
THE TOWN
OF ABITA
SPRINGS***





RECYCLING SERVICES

Our recycling services are designed to make it easy for you to do your part in protecting the environment. We offer convenient curbside recycling programs that allow you to responsibly dispose of paper, plastics, metals, and other recyclables. By partnering with Coastal Environmental Services, you contribute to reducing landfill waste and promoting sustainability within your community.

RECYCLING

Recycling for Abita Springs will be picked up every Monday.

Please remember to put your recycling cart/bin out the night prior to service.

Remove your recycling cart/bin from the curb once your cart bin has been serviced. If your recycling cart/bin is at the curb on your scheduled garbage day, your recycling cart/bin will be dumped with the garbage.

NO BAGS! NO GLASS!

ITEMS TO RECYCLE

Please remember to put your recycling cart/bin out the night prior to service. Remove your recycling cart/bin from the curb once your cart bin has been serviced. If your recycling cart/bin is at the curb on your scheduled garbage day, your recycling cart/bin will be dumped with the garbage. Please leave your recyclables loose in the cart. **Do not put in trash bags** as these bags are not recyclable.

ACCEPTABLE ITEMS:



- ✔️ Plastics #1 (soda/water bottles) and #2 (milk/juice/shampoo/detergent containers)
- ✔️ Newspapers, junk mail, phone books, catalogs, office paper & magazines
- ✔️ Corrugated cardboard
- ✔️ Boxboard (cereal boxes/soft drink boxes)
- ✔️ Small aluminum and steel cans

UNACCEPTABLE ITEMS:



- ✗ Glass
- ✗ Plastics #3-#7
- ✗ Plastic Bags
- ✗ Waxboard (Juice Boxes/Milk Containers)
- ✗ Styrofoam
- ✗ Bubble Wrap
- ✗ Loose Plastic Film
- ✗ Household Garbage
- ✗ Yard Trimmings
- ✗ Building Materials

- ✗ Household Waste
- ✗ Hazardous Waste (Electronics, Batteries, Paint, Chemicals, Oil, or Oil Filters)
- ✗ Soiled Papers (Diapers, Tissues, Paper Towels, Paper Plates, Napkins, or Pizza Boxes)
- ✗ Clothes Hangers
- ✗ 6-Pack Rings
- ✗ No Chemical Containers
- ✗ No Packing Materials
- ✗ No Plastic Wrap

RECYCLING CODES

Plastic containers come with a number printed on them ranging from one to seven. This number is used to identify the type of plastic used in the creation of the product. **Not all plastics are recyclable.** There are numerous plastic-based products that cannot break down and cannot be recycled. For example, if a plastic container has a number three printed on the bottle, that indicates that the water bottle has been made from polyvinyl chloride. If the plastic container has a number five, it means that it's been made of polypropylene. Both Polyvinyl chloride and polypropylene are two materials that are not accepted by most public recycling centers. We've provided a graphic above to help better understand the difference between the plastics.

PLASTIC RECYCLING CODES								
 PET	 PE-HD	 PVC	 PE-LD	 PP	 PS	 O	 ABS	 PA
#1 PET(E) Polyethylene Terephthalate	#2 PEHD/HDPE High-density polyethylene	#3 PVC Polyvinyl chloride	#4 PELD/LDPE Low-density polyethylene	#5 PP Polypropylene	#6 PS Polystyrene	#7 O (OTHER) All other plastics	#ABS Acrylonitrile butadiene styrene	PA Polyamide
Food containers, water bottles, polyester fibers	Plastic bags, plastic milk containers, detergent bottles	Flooring, window frames, plumbing pipes	Plastic bags, squeeze bottles, frozen food bags	Disposable cups, take away and yogurt containers, furniture	Styrofoam, toys, CD cases, video cassettes, take-out containers	Bioplastics, CD, baby milk bottles, reusable bottles	Appliances, toys, computer plastics	Nylon like socks, stockings, rope
								

What happens with the Recyclables that are collected from your residence?

In Abita Springs, we collect the recyclables from the curb every Monday.

The recyclables are then brought to our transfer station in Lacombe and dumped into the recycling trailers along with the other recyclables collected from other Municipalities and HOA's.

Once the trailers are full, they are transported to the CW Recycling. This is the recycling facility in Jefferson, La.



What's going on in Slidell?

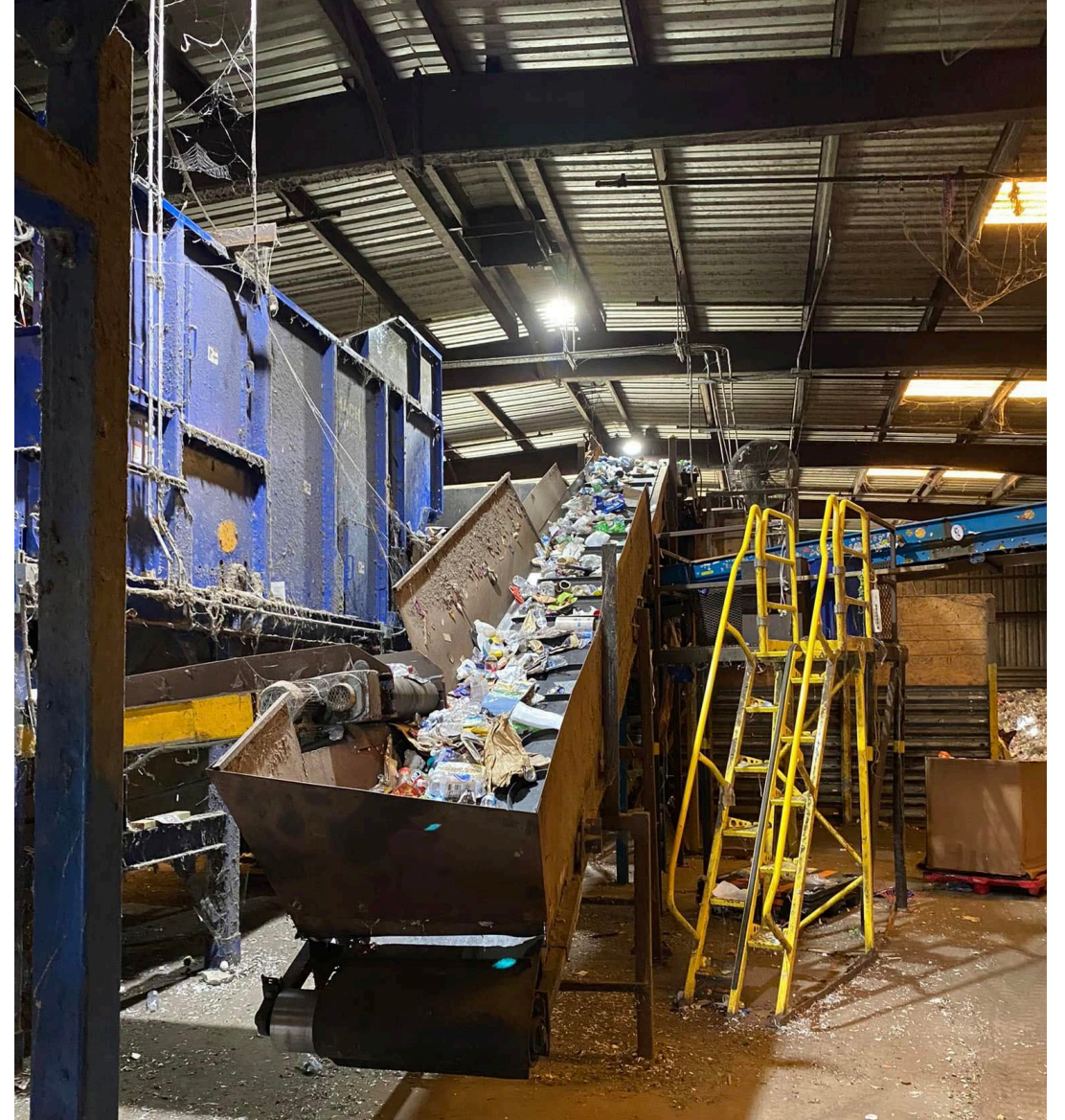
Councilman Nick DiSanti · October 5, 2024 · 🌐

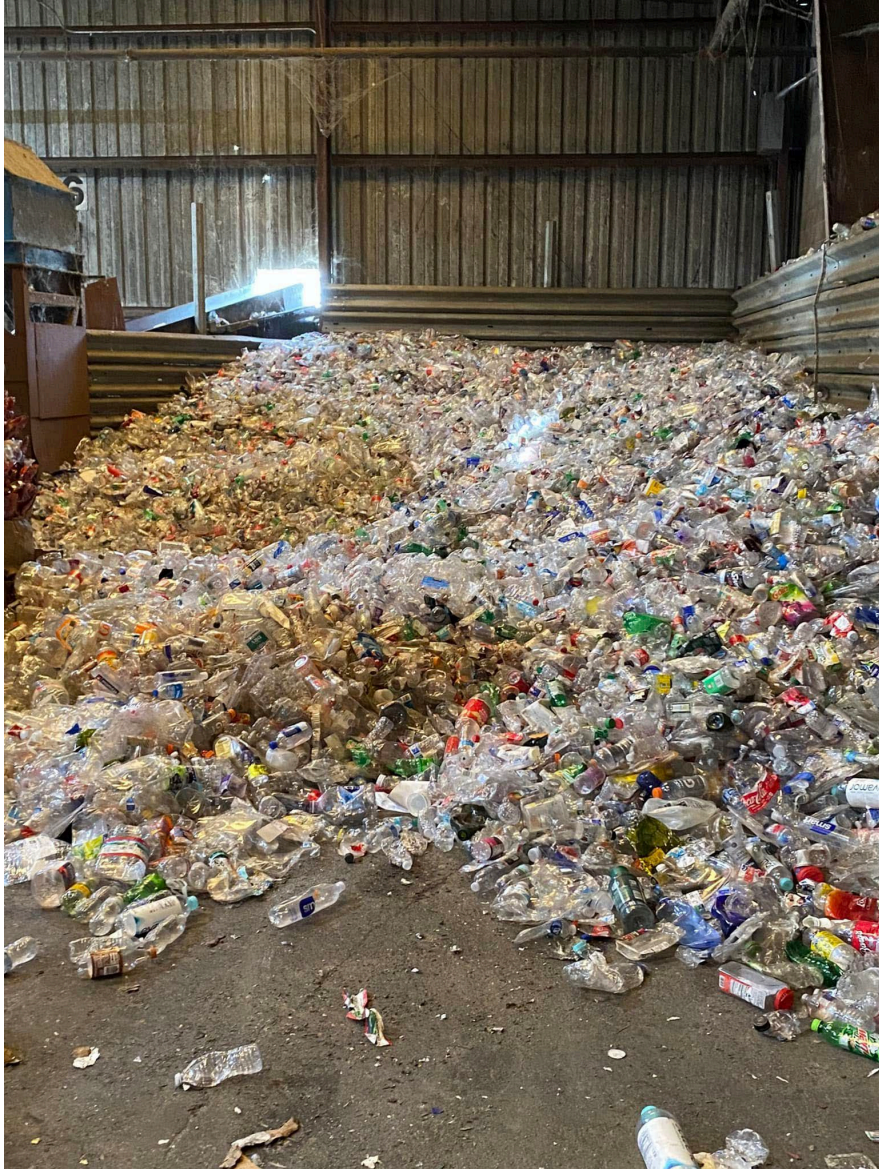


This week I took a tour of the recycling facility that Coastal Waste Management uses to process all of the items they pick up from Slidell residents. It was amazing to see how all of the items are sorted for processing! Here's a few rules to follow when recycling:

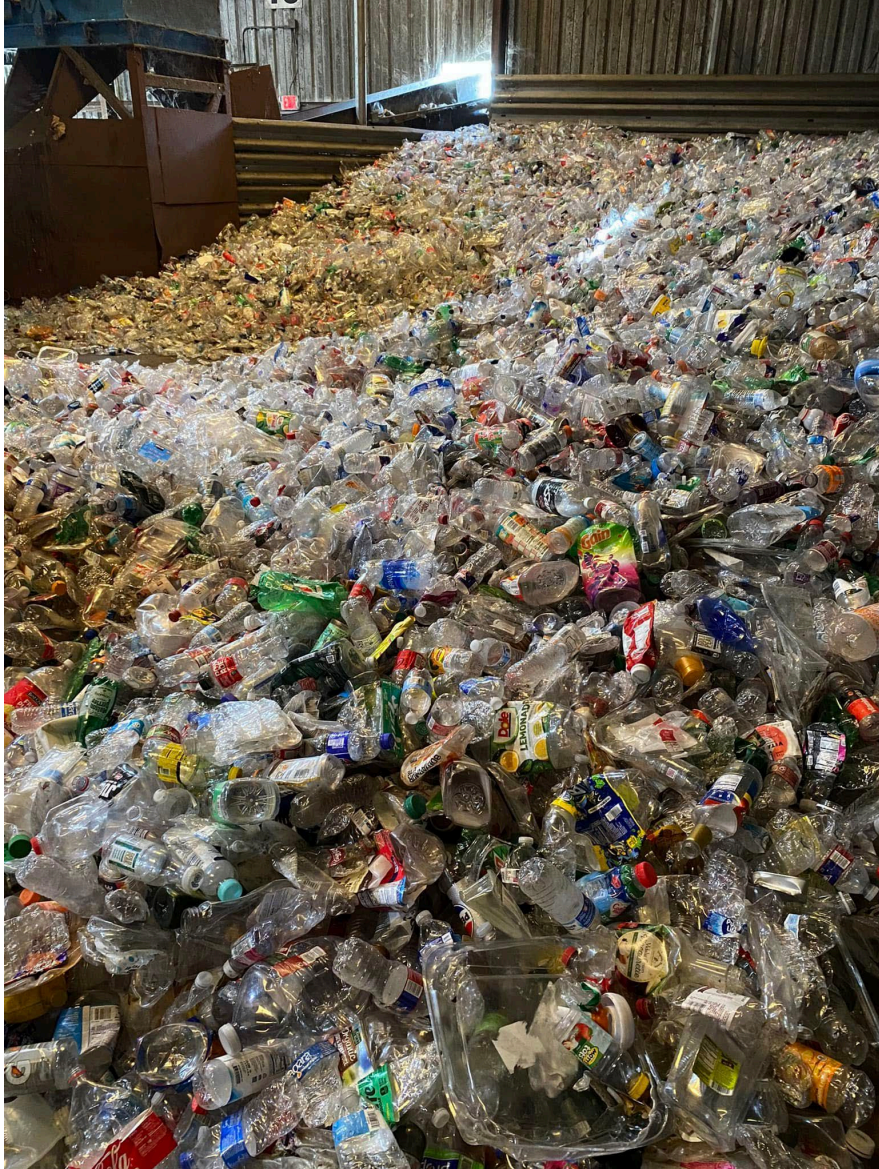
- do not put your plastic bags in your recycling bin, bring them to stores like Walmart or Winn Dixie and place in their plastic bag recycling cans
- only place #1 & #2 plastics in your recycling bin, you can check the number by looking at the bottom of the container at the number listed in the recycling triangle
- no glass is recycled through Coastal but you can keep an eye out for city events coming up that will provide glass recycling opportunities
- any type of paper can be put in your recycling bin
- any type of metal food or beverage cans can be put in your recycling bin

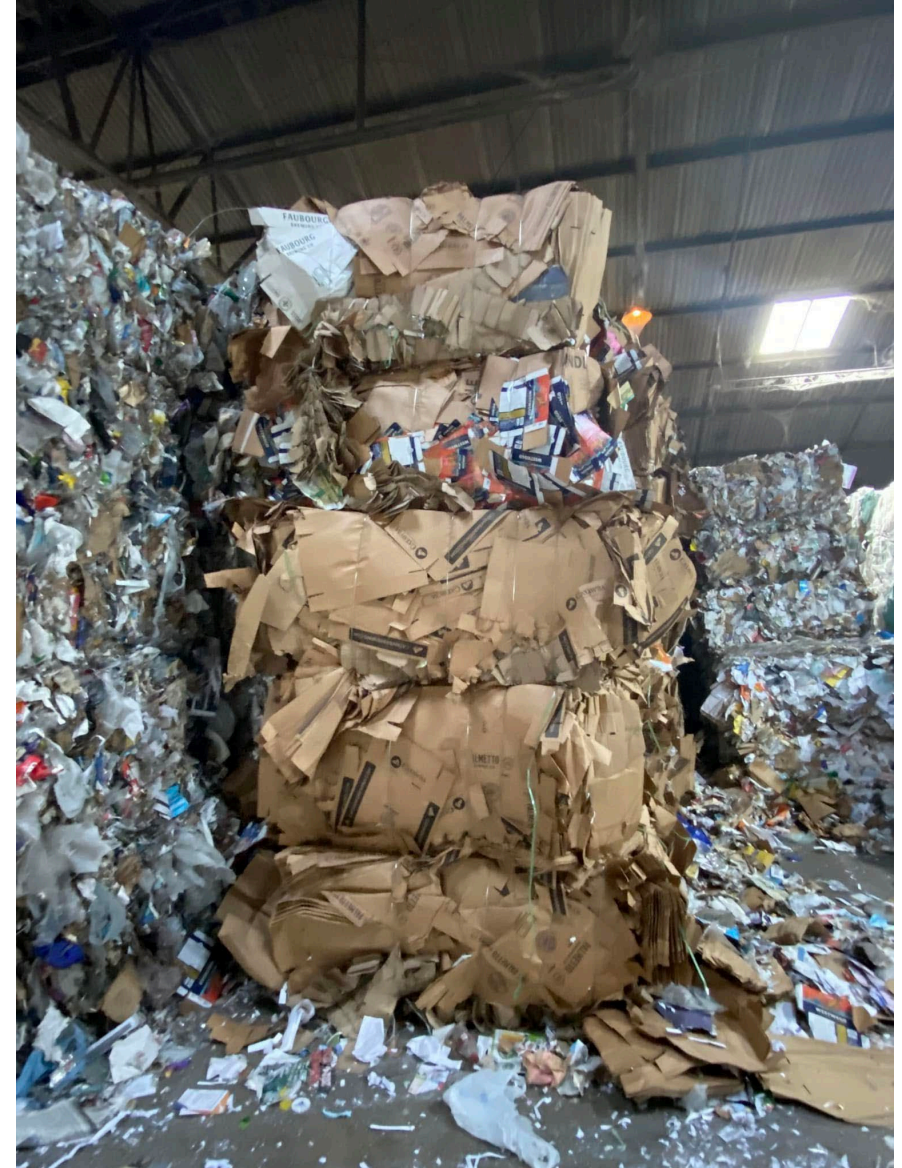
If you do not currently recycle, please consider doing so. Recycling is making a real difference in reducing waste and conserving resources. Since we pay for this service, let's take full advantage of it!













WWW.CES-LA.COM

☎ St. Tammany: (985) 781-3171

☎ City Of Bogalusa: (866) 536-8283



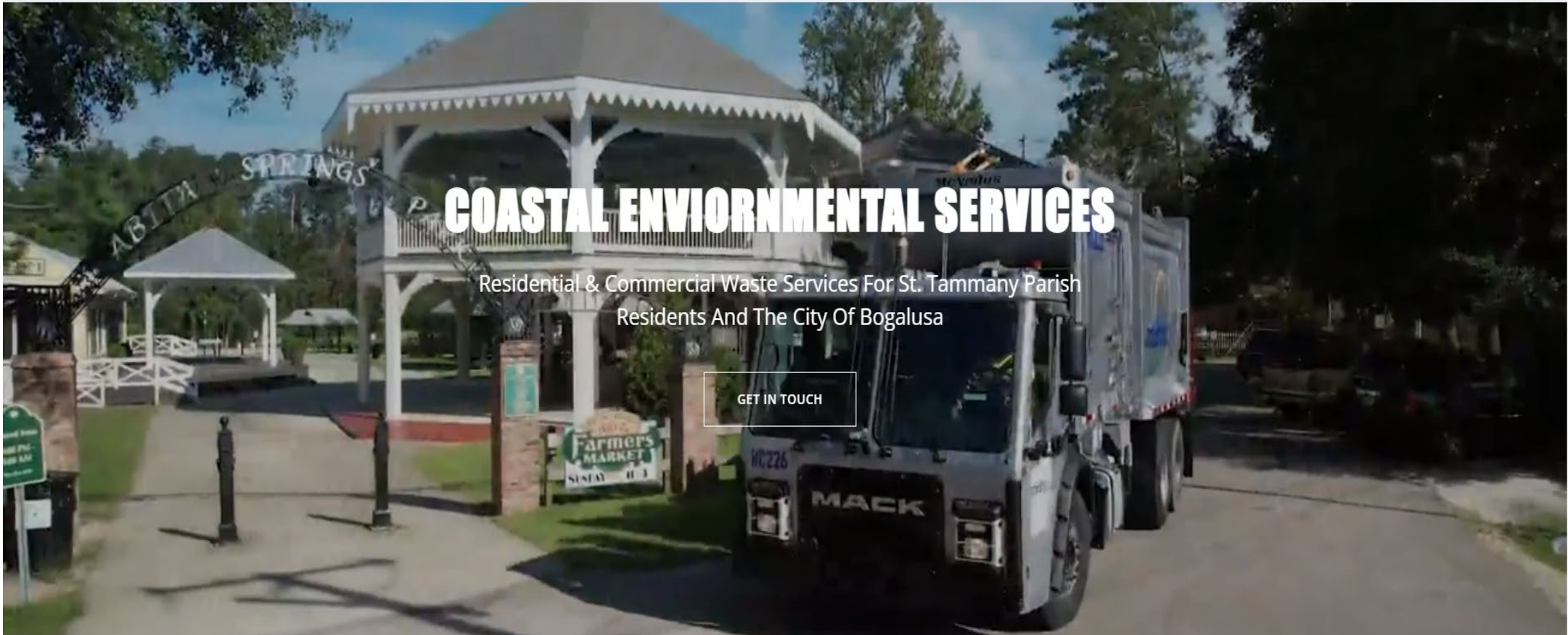
[SERVICES](#) ▾ [MUNICIPALITIES](#) ▾ [CUSTOMER CARE](#) ▾ [OUR COMPANY](#) ▾ [STORM INFORMATION](#)

[PAY MY BILL](#) →

COASTAL ENVIRONMENTAL SERVICES

Residential & Commercial Waste Services For St. Tammany Parish
Residents And The City Of Bogalusa

[GET IN TOUCH](#)





ABITA SPRINGS

Residential & Commercial Waste Services for Abita Springs Residents.

GET IN TOUCH

QUICK MENU

EXPLORE OUR SITE WITH QUICK LINKS

CUSTOMER CARE →

BULK PICKUP
SCHEDULE



DUMPSTER RENTALS →

PAY MY BILL →



CONTACT CUSTOMER CARE

Missed Pickup

Bulk Pickup

Request A Cart

Service Issue or Question

Start New Commercial Service

Roll-Off Container Rental

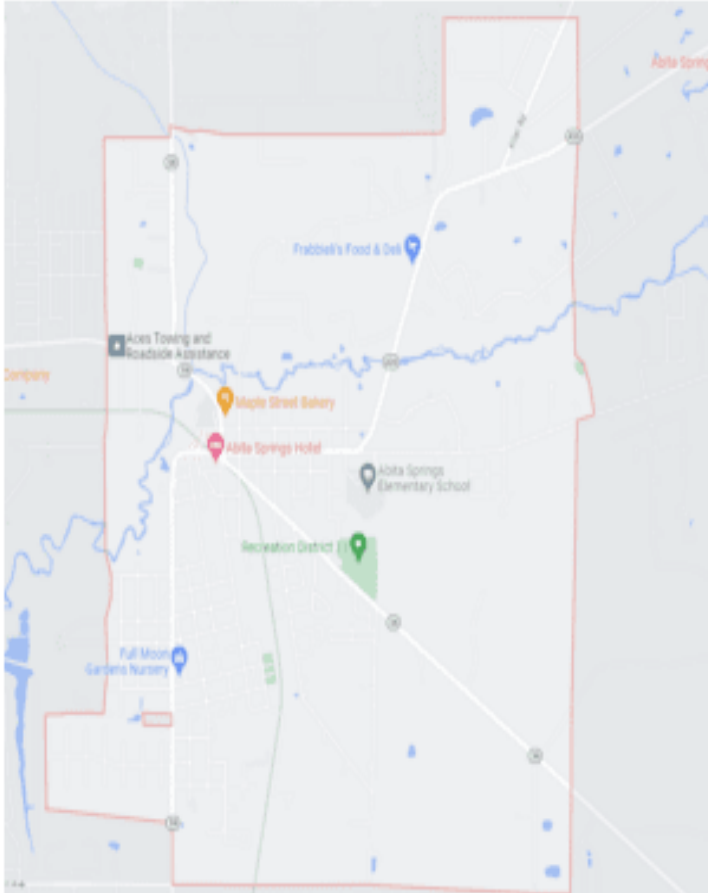
Coastal Environmental Services is very excited to be your provider for Solid Waste and Debris Collection. We look forward to being a part of the communities we serve throughout the Town of Abita Springs for many years to come. We are very thankful for the opportunity to serve you. Our commitment is to continue to work hard each and every day so we can exceed your expectations and assist in Keeping Abita Springs Beautiful.

Effective Monday October 3rd, we are enhancing the service level in the Town of Abita Springs by using one of our New Automated Side Loader (ASL) trucks. The arm for this new Automated Truck picks up from the right side of the vehicle. Therefore, the truck will pick up on one side of the street and then pick up on the other side of the street, which may be later in the day. We are also moving to **CART CONTENT ONLY**. This means that all of your household waste must be containerized. All grass and leaves should also be bagged and *containerized*. Your service days remain the same. Recyclables are collected every Monday. Household Waste is collected every Tuesday.

- **CART CONTENT ONLY** – Please place all solid household waste items in your cart. Please try and bag as much of your household waste as possible prior to placing in cart. Please do not overfill the cart(s). The lid should not be open more than 6 inches.
- **CARDBOARD BOXES** – Cardboard boxes should be broken down and placed inside of the carts. This includes delivery boxes from FedEx, Amazon, UPS, etc. The only exception would be large TV boxes or large appliance boxes.
- **CART PLACEMENT** – Carts should be placed at the curb the night prior to your service day or by 5am on the day of service. Carts should be placed no more than 3 feet from the curb. Cart should be placed at least 3 feet from any vehicle, mailbox, fire hydrant, power pole, or fence. Carts should NOT be placed under trees or low hanging lines. The handle for the cart should be facing your residence. The opening for the lid should be facing the street.
- **CARTS** – Every resident has an existing 95 gallon green cart. You can rent an additional cart from us for \$24 per year. The rental fee must be paid up front. You can also purchase your own cart as long as it is 35 gallons or larger and is similar in shape. We **DO NOT** pick up round cans.
- **BULKY/GREEN WASTE** – Please visit our website at www.ces-la.com. We will pick up Bulky/Green waste the 3rd week of every month. This can be located under the “Pickup Schedule” on our website. Please **DO NOT** place Bulky/Green Waste piles under trees or low hanging wires. Also please keep piles at least 3 feet from any vehicle, mailbox, fire hydrant, power pole, or fence. All leaves, pine straw, small twigs and limbs should be bagged. Please place your bagged debris in your cart(s) so it can be picked up with the regular household garbage.
- **HANDICAP SERVICE** – Please contact our office to see if you are eligible for Handicap Service under the terms of the agreement. We will need documentation from a physician stating you are handicap in order to be eligible for this service.
- **PRIVATE ROADS** – We will not access any private roads or driveways without a signed release by the resident(s).
- **ROUTES** – The arm for the Automated Trucks picks up from the right side of the vehicle. The truck will pick up on one side of the street and then pick up on the other side of the street, which may be later in the day.
- **REQUEST FOR SERVICE** – Please visit the “Customer Care” section of our website at www.ces-la.com , if you need to report a possible missed pickup, request for bulky/green waste pile to be picked up or request to rent a second cart or need your current cart repaired. You can also contact one of our Customer Service Representatives at **985-781-3171** or email at info@ces-la.com with any questions of concerns.

BULK PICKUP SCHEDULE FOR TOWN OF ABITA SPRINGS

We offer bulky/green waste pickup the 3rd Monday of every month for the Town of Abita Springs. We encourage all residents to put their bulky/green waste to the curb on the Sunday night or very early Monday morning of when we are scheduled to be in the area. We will start sweeping the area at Southwind subdivision on the Monday of the 3rd Monday that we are in the area. We will sweep the entire area. Once we have finished sweeping the area, we will not return to the area until the 3rd Monday of the following month.



- ✓ Have your Bulky Waste to the curb on the Sunday night before the 3rd Monday of the month.
- ✓ Place your Bulky Waste at least 3 feet away from mailbox, vehicle, fence, cable box, post, etc.
- ✓ Please do not place Bulky Waste under low hanging trees or power lines.
- ✓ Bagged green waste should be placed in cart so it will be picked up along with garbage.

1 TODAY < > July 2025

🌐 (GMT-06:00) America/Chicago ▾ 📅 ▾

Sun	Mon	Tue	Wed	Thu	Fri	Sat
29	30	1	2	3	4	5
6	7	8	9	10	11	12
13	14	15	16	17	18	19
20	21 Bulky Waste Pickup	22	23	24	25	26
27	28	29	30	31	1	2

Your Locally Owned Waste & Debris Partner

JACK FRANCONI

EXECUTIVE GENERAL MANAGER

Cell: 985.630.3562

jack.francioni@ces-la.com

63209 HWY 434, Lacombe, LA 70445 • 985.781.3171



- On behalf of our entire TEAM at **Coastal Environmental Services**, we would like to say “THANK YOU” for the opportunity to serve you. We appreciate your business.



**Garbage Rate Adjustment
Council Presentation
Date: July 1, 2025**

Background Information

- The Town currently contracts with Coastal Environmental Services for residential garbage, recycling and debris collection.
 - Residential Garbage – 1/week
 - Recycling – 1/week
 - Debris – 1/month
- **Current charge per home (from Coastal): \$26.05/month**
- **Current charge to residents: \$26.70/month**
- **Last Rate Increase: January 2023**

Coastal's New Rate due to changes in the Urban Wage Earners and Clerical Workers (All items):

- \$26.81/cart **vs** existing \$26.05/cart
- 2.9% increase from prior contract

Options Presented for Discussion

<u>Option</u>	<u>Resident Charge</u>	<u>Impact</u>
1. No Change	\$26.70	Town absorbs the increase; deficit per cart: \$0.11
2. Match Coastal Increase (2.9%)	\$27.48	Pass full increase to residents, maintain buffer
3. Partial Increase	e.g. \$27.00	Share increase between Town and residents

Estimated Financial Impact

(1,250 Carts)

MONTHLY

OPTION	RESIDENT CHARGE	MONTHLY REVENUE	MONTHLY COST	NET IMPACT TO TOWN PER MONTH
No Change	\$26.70	\$33,375.00	\$33,512.50	(\$137.50) deficit
Match Increase (2.9%)	\$27.48	\$34,350.00	\$33,512.50	+\$837.50
Partial Increase	\$27.18	\$33,975.00	\$33,512.50	+\$462.50

ANNUAL

OPTION	RESIDENT CHARGE	ANNUAL REVENUE	ANNUAL COST	ANNUAL NET IMPACT TO TOWN
No Change	\$320.40	\$400,500.00	\$402,150.00	(\$1,650.00) deficit
Match Increase (2.9%)	\$329.76	\$412,200.00	\$402,150.00	+\$19,800.00
Partial Increase	\$326.16	\$407,700.00	\$402,150.00	+\$5,550.00

RESIDENT MONTHLY & ANNUAL IMPACT

OPTION	CURRENT MONTHLY CHARGE	PROPOSED MONTHLY CHARGE	INCREASE
No Change	\$26.70	\$26.70	\$0.00
Match Increase (2.9%)	\$26.70	\$27.48	\$0.78 / month \$9.36 / annual
Partial Increase	\$26.70	\$27.18	\$0.48 / month \$5.76 / annual

Recommendation

Discuss and decide on preferred option:

- No change (Town absorbs cost)
- Pass full increase to residents
- Apply partial increase to sustain current buffer in 2025 budget

Any changes to current rate will require a
Resolution approved by the Council.